

# ASF M 2020-2021 LEARNING SCENARIOS ROADMAP

EXECUTIVE SUMMARY

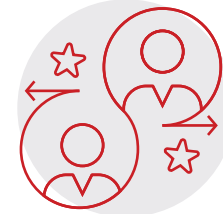




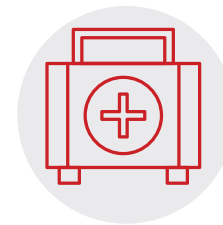
ASFM is committed to welcoming our students back to learning on August 10th in an open minded, caring and global manner, empowering all students to continue to develop their individual potential in this ever-changing world and based on the following principles:

**ASFM**

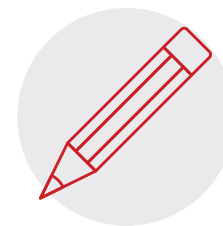
*Act with fidelity to ASFM's Mission, Vision and Core Values.*



*Prefer face-to-face, onsite learning over online, distance learning whenever it is safe to do so.*



*Prioritize student, faculty, and staff health, safety, and wellbeing over other principles.*



*Ensure hygiene- and health-related policies are research-based, clearly communicated, effectively implemented, and diligently enforced.*



*Promote practices and policies to reduce risk of virus transmission and support our capacity to be responsive and agile when facing changing health circumstances.*





# Drivers for decision-making

## Primary Driver:

ASFM honors the learning, health, safety and the wellbeing of all of its community members.

**Additional factors:** —→

**A**

*Federal regulations and decrees  
(Sistema de semáforo nacional)*

**B**

*Nuevo Leon regulations, decrees  
and/or required filters*

**C**

*SEP regulations, decrees  
and/or required filters*

**D**

*Santa Catarina and San Pedro  
regulations and decrees*

**E**

*Community spread / outbreak rates*

**F**

*Flexibility*

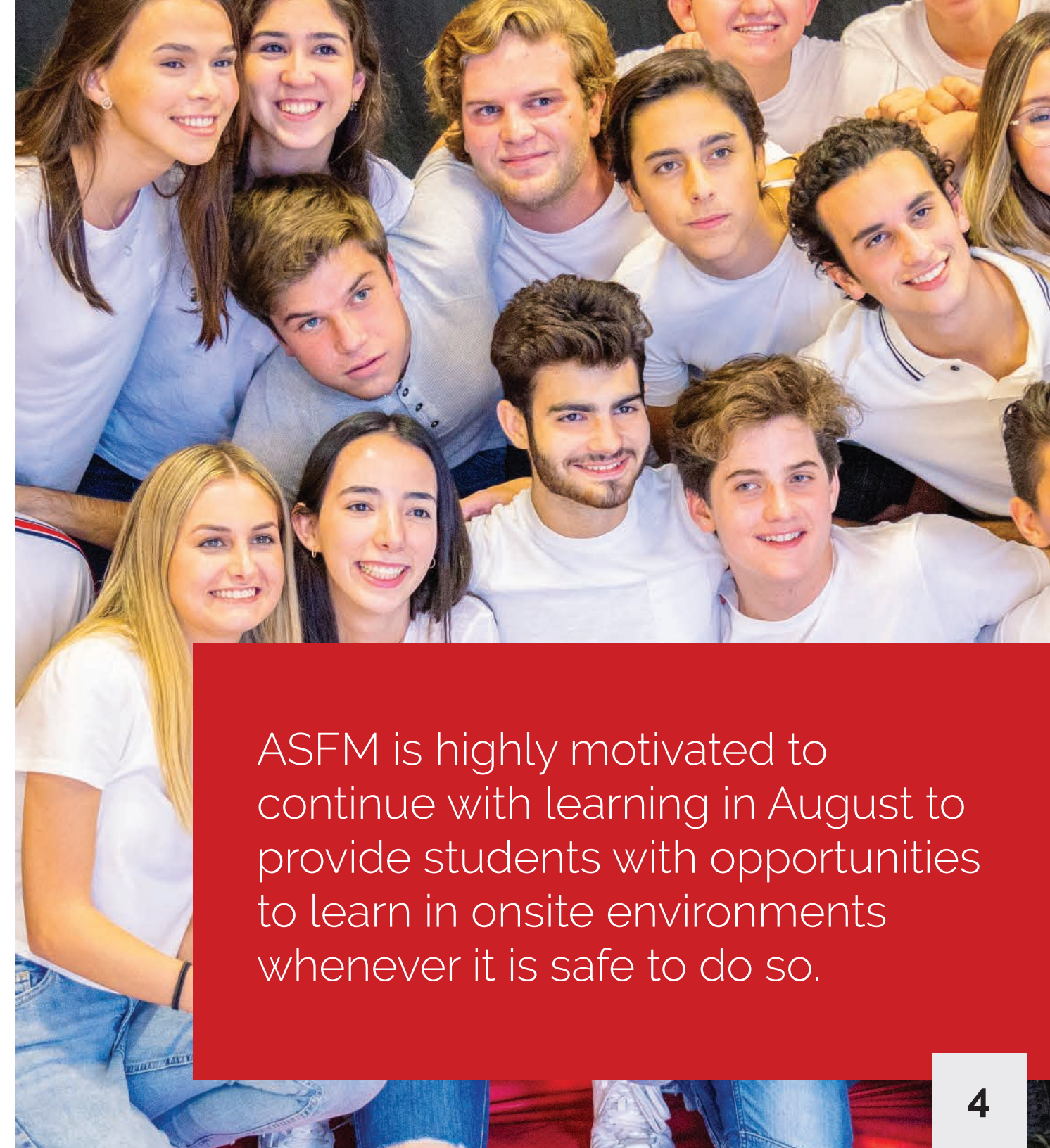
**G**

*Community choice*

*All decisions will be driven by all these factors.*



ASFM does not believe distance learning on its own is the best long-term substitute for regular school. Rather, distance learning is a necessary expedient when health and safety conditions leave no other option. Accordingly, ASFM has developed the three different learning scenarios described below to increase the likelihood that it will be positioned to continue with learning in August 2020. All three models are informed by ASFM's Mission and Vision.



ASFM is highly motivated to continue with learning in August to provide students with opportunities to learn in onsite environments whenever it is safe to do so.

The following three learning scenarios are being prepared for use:

**A**

### **Scenario A (Full Onsite)**

Learning onsite at ASFM as usual; Students attend a full schedule onsite and access learning experiences both on and offline.

**B**

### **Scenario B (Hybrid)**

Students experience a modified schedule with limited onsite days. Access to learning experiences will be both on and offline.

**C**

### **Scenario C (Full Online/DLP)**

Students experience a Distance Learning Schedule and experience all learning online.



# Scenario B

## Hybrid Statements:





# Teaching and Learning Statement

The administrative teams, curriculum departments, and teachers are working on new concepts and plans that align to the various learning scenarios that may be in place for the 20-21 school year. We will continue with the training of staff to help them better understand more effective and efficient ways to address whole groups, small groups and individualized learning. Adapting to a new way of thinking about learning is important for all stakeholders. Staff will prepare for various scenarios that include on-campus, hybrid, and distance learning models. Professional development will focus on student ownership of learning, student agency, basic skills, viable assessment, and asynchronous / synchronous instruction.

# Schedule Statement

A schedule will be created that is responsive to future health regulations from the local health authorities. Any on-campus attendance will be reduced in some capacity. A rotation will be created that supports the learning needs and the well-being of students, staff and the general community through the lens of our planning drivers. Variables we are considering include flexible scheduling, transportation, distancing protocols, individual cases and student-teacher ratios.



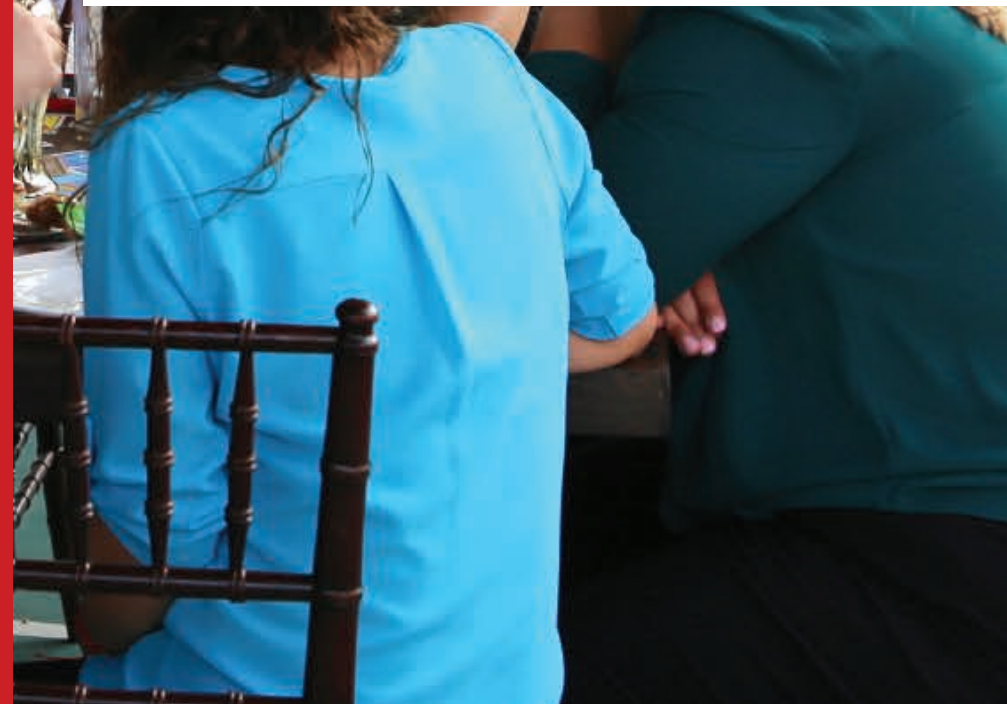


## Transportation Statement

Access to the campus will be limited to students and staff. Families will bring their own children in their household to school. Carpooling between families will not be permitted. Cars will be permitted on campus to drop-off students at specific points. Private transportation through LOGO will not be available during the first few months until social distancing regulations and protocols ease. Departure from the campus will be planned to limit social interaction.

## Nutrition Statement

To reduce the spread of infection, there will be a set of protocols created that describe permissions and restrictions on food and drink during on-campus learning. Health professionals and professional resources will be guiding our decision-making for all stakeholders. On-site access to food for sale will be paused at first and a gradual approach will be implemented based on capabilities, need and health risks. Food from home will be limited to specific amounts and locations.







## Campus Safety and Security

Specific decisions, plans, protocols and filters will be updated on an ongoing basis as more information becomes known, updated public health guidelines are issued or updated, and best practice for schools evolves. Strategies are being developed and will be updated regarding enhanced sanitizing, cleaning and disinfection processes, use of facilities, access to facilities, appropriate use of safety filters, etc.

## Health and Legal Services

As the guide to a healthy learning environment, specific protocols will be developed based on the three scenarios. Guidelines will be developed for entry to the school, classrooms, bathroom facilities and playspaces. We are developing structures that allow for the fewest number of students and staff to be on campus at one time and we will manage special needs cases accordingly. Protocols for hours of teacher-student onsite contact and limited social interaction are being developed. Health screening checkpoints and parent guidelines and filters will be produced and followed to protect the community. Personal protection equipment will be needed for students and staff. Protocols and education around hand washing, face masks, face shields and general cleanliness will be developed. Quarantine guidelines and procedures will be communicated to families and staff who have left the country. No personal items from students will be permitted on campus. A schedule for cleaning classrooms and equipment will be developed.



## Important Reminders

Our hope and desire is to safely resume classes onsite on **August 10th**, but as we all know, there are many variables out of our control that have to be determined before then.

- *The onsite (Scenario A) and hybrid (Scenario B) models being developed will need to meet specific health standards, comply with official State regulations, follow successful trends from other parts of the world, and allow for effective teaching and learning.*
- *ASFM will only be able to consider Scenario A or B if the Federal and State authorities allow us to do so based on the official phases of reopening (Sistema de semáforo nacional).*
- *In the event that our local community experiences a spike in COVID-19 cases and an interruption of physical operations occurs once again due to risk mitigation or governmental decree, a shift to Scenario C will happen immediately.*
- *We will do our best to work with all parents, students, and staff who have specific needs and/or situations that might prevent them from starting the school year in either an onsite or hybrid model on August 10th and/or who experience future problems with possible shifts from one scenario to another.*



We will be in touch with the ASFM community during June and July to update our status on the August 10th initiation of classes. Please be on the lookout for future emails and Weekly Eagle messages regarding additional details and logistics.

Please note that specific details of this Roadmap are subject to change at any moment based on the drivers mentioned above.





**We believe in Open Minds, Caring Hearts,  
and Global Leadership as essentials for a  
healthy and successful life.**



### Note

ASFM would like to thank  
ASIJ in Tokyo, Japan and AISM  
in Maputo, Mozambique for the  
ideas and examples from their schools.

